



Cherrywood Close, London, E3

BUTLER  STAG



A beautifully presented two-bedroom, first-floor apartment offering 773 Sq/Ft of internal living space, set within a well-maintained development with the added benefit of secure gated parking.



Leasehold

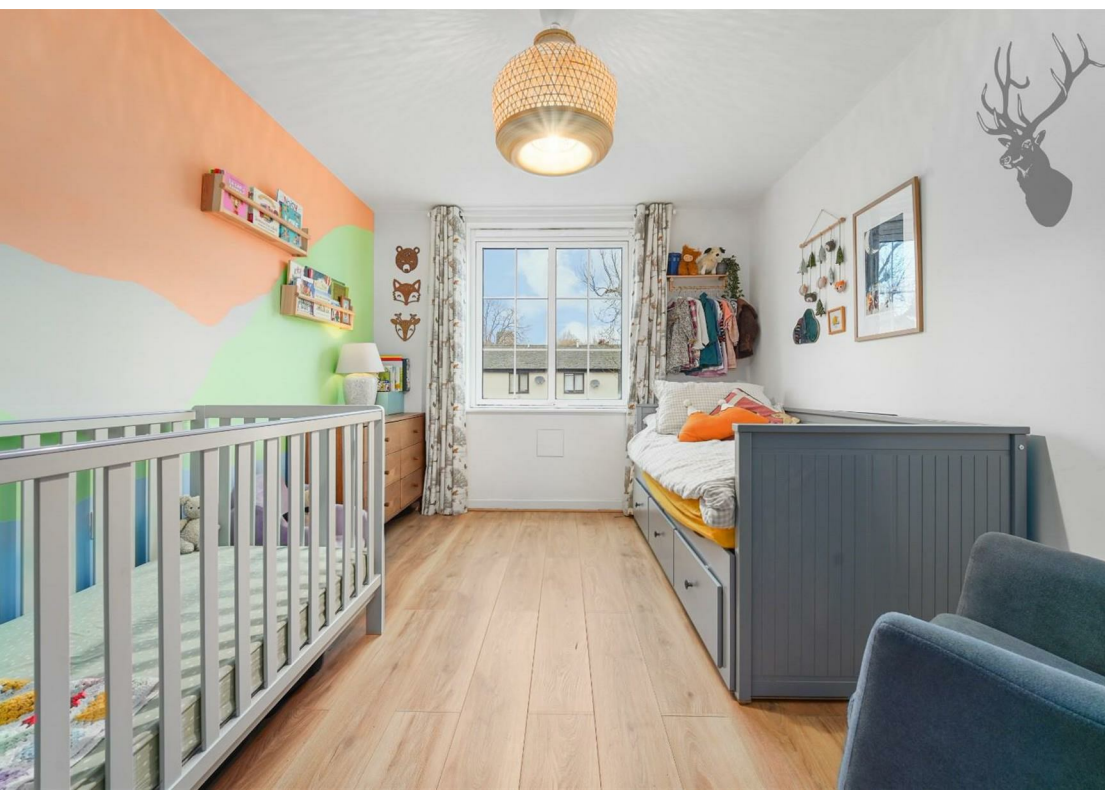
- First Floor Apartment
- Gated Secure Parking (Allocated Space)
- Welcoming Entrance Hallway
- Lift Access to All levels
- Two Bedrooms
- Juliette Balcony
- 773 Sq/Ft Internal Living Space
- Mile End Tube Station and Victoria Park A Moments Walk Away

The property features a spacious and well-proportioned living/dining area which is open plan to a modern kitchen. The two generous bedrooms, ideal for professionals, sharers. The apartment is positioned on the first floor, providing a pleasant sense of privacy and natural light throughout.

Ideally located moments from Victoria Park, the apartment offers easy access to one of East London's most popular green spaces, perfect for walking, cycling, and weekend leisure. Mile End Underground Station is close by, providing excellent transport links via the Central, District, and Hammersmith & City lines.

Additional benefits include secure gated parking, and a highly sought-after location combining green space with outstanding connectivity.

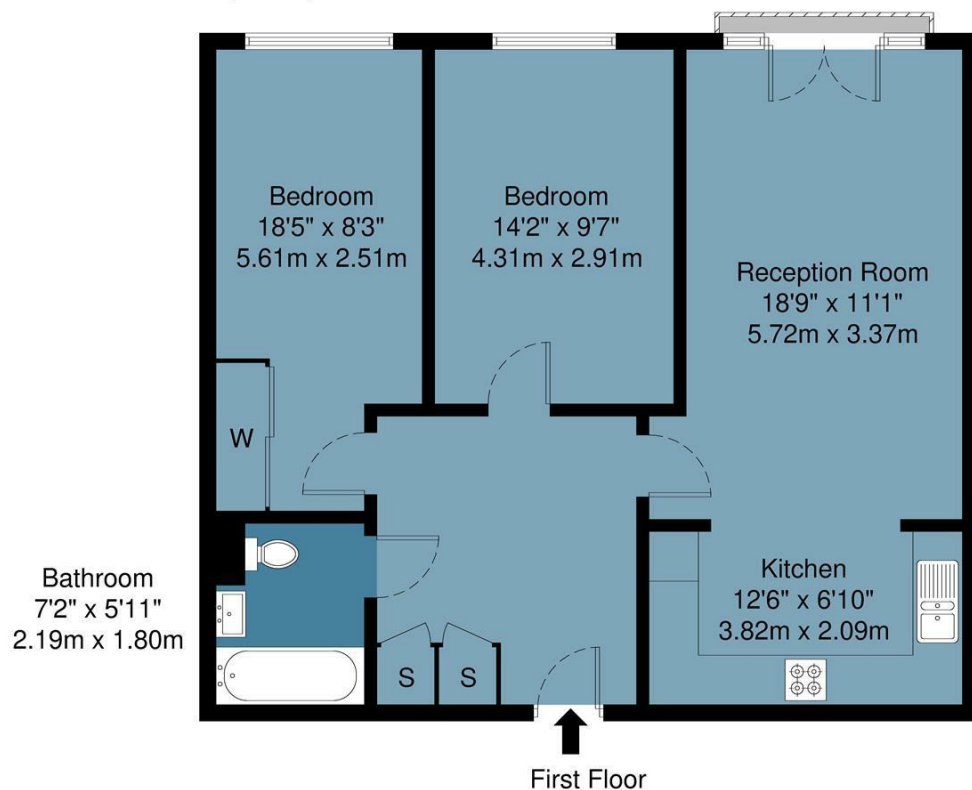




Cherrywood Close, E3

Approx Gross Internal Area : 71.9 sq m / 773 sq ft

BUTLER & STAG



Measurements are approximate and for illustration purposes only. While we do not doubt the accuracy and completeness, we advise you conduct a careful independent assessment of the property to determine monetary value.
© @ Maison VUE | www.maisonvue.com

IMPORTANT NOTICE - These particulars have been prepared in good faith and they are not intended to constitute part of an offer or contract. We have not performed a structural survey on this property and the services, appliances and specific fittings have not been tested. All photographs, measurements, floor plans and distances referred to are given as a guide and should not be relied upon.

BUTLER & STAG

☎ 020 8102 1236

🏠 508 Roman Road, Bow, London, E3 5LU

✉ bow@butlerandstag.com

www.butlerandstag.uk